

GEHL V400 SKID LOADER

The World's Largest Skid Loader

Table of Contents

- [Key Features](#) 1
- [Performance](#) 2
- [Operator's Cab](#) 3
- [Controls](#) 4
- [Engine](#) 5
- [Hydraulics](#) 6
- [Attachment System](#) 7
- [Lift Arm](#) 8
- [Serviceability](#) 9
- [Specifications](#) 10
- [Comp. Comparisons](#) 11



GEHL

KEY FEATURES

V400 Skid Loader



The all-new, vertical-lift model V400 skid loader complements the already robust product offering from Gehl. With its smaller brothers, the models V270 and V330, the vertical-lift skid loader product line continues to grow.

- Cummins Tier III turbocharged diesel engine with 326 ft. lbs. (442 Nm) of torque, provides the power to handle the largest jobs with ease.
- Industry-leading performance with 4,000 pound (1814 kg) rated operating capacity, the highest operating capacity of all skid steer loaders.
- The exclusive Gehl vertical-lift boom design delivers true vertical lift for easy truck and material loading, as compared to the 's-shaped' path found on competitive models.
- State-of-the-art operator's cab features unsurpassed ergonomics and superior comfort.
- Extra-long wheelbase (54.6 inches/1387 mm) and standard Hydraglide™ ride control enhance stability and provide a smoother ride.

PERFORMANCE

V400 Skid Loader



The Gehl V400 skid loader is a shining example of Gehl's superior innovation and well thought-out product development.

- Vertical-lift boom offers customers enhanced strength and 144" (3647 mm) of lift height. This vertical-lift boom provides optimal forward reach at trailer loading and dumping heights.
- The redesigned chassis aids in superior weight distribution, which further enhances stability.
- Thick steel plating and heavy-duty pins and bushings strengthen the loader for heavy-duty work.
- Electronic engine control and electronic foot and electronic hand throttles allow operation at partial throttle, reducing sound levels and fuel consumption (not available with hand/foot controls).
- Two-speed drive as standard equipment, provides travel speeds up to 11.2 mph (18 km/hr) with two-speed motors.

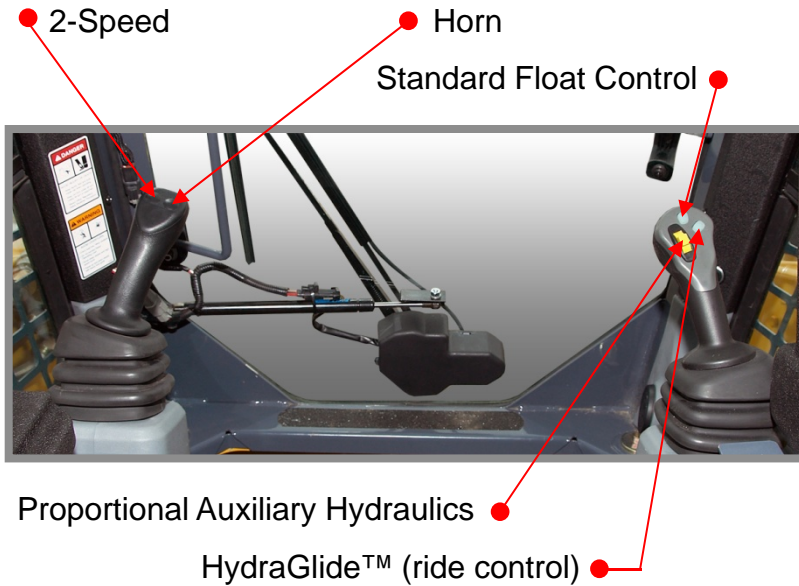
OPERATOR'S CAB



The operator's compartment on the V400 skid loader provides a safe and comfortable working environment for operators of all sizes.

- Cab forward design optimizes the view to the bucket. ROPS/FOPS level II is standard equipment.
- Standard mechanical suspension seat and optional air-ride suspension seat provide enhanced levels of comfort.
- New side-folding restraint bar and armrests with multiple adjustments augments operator safety and comfort.
- Extra-large side screens combined with a low-profile lift arm design provide a wide field-of-view to the side work areas.
- Optional pressurized sealed cab enclosure with sound reduction material and rear-mounted air filter provides a cleaner and quieter operating environment.
- Domed, wide-view glass door option reduces glare and provides optimal visibility to the lift arm, work tool and front work area. Large top and front windows provide a clear view of the lift arm in its higher lift positions.
- Dome light, cup holder, 12-volt socket and storage tray.
- LCD display replaces gauges and is customizable to user preference.

CONTROLS

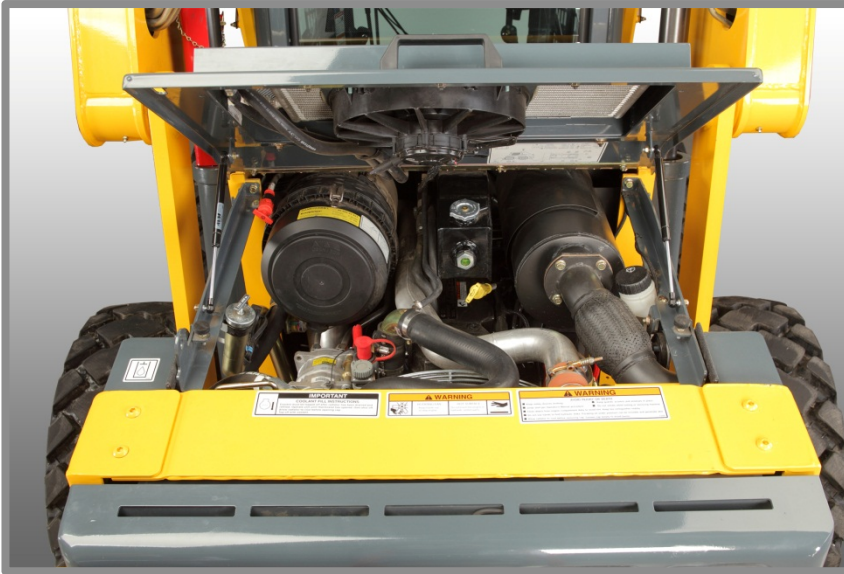


Controls on the Gehl V400 skid loader are ergonomically designed to reduce operator fatigue and increase productivity.

- Adjustable joystick handles provide ease of operator control with minimal effort, reducing fatigue.
- New upper-left and upper-right instrument panels provide easy readout and switch access.
- Pilot joystick controls or pilot hand/foot controls provide the ultimate in operator comfort, ease and controllability. Mechanical T-Bar controls are also available.
- Infinitely adjustable proportional auxiliary hydraulics.
- Hydraloc™ system applies brakes whenever the operator raises the restraint bar, leaves the operator's seat or switches off the ignition.



ENGINE



The Gehl V400 skid loader comes equipped with the power to tackle virtually any job.

- Cummins QSB 4.5 Tier III diesel engine provides a generous power-to-weight ratio.
- Turbocharged engine produces 326 ft.-lbs. (442 Nm) of peak torque and 99 gross horsepower (74 kW).
- Hydraulic fan with swing-out cooler reduces fuel consumption, reduces noise levels, and provides improved service access.
- Automatic grid heater engine intake heating system provides superior cold-weather starting.
- Engine has conventional water/ethylene glycol liquid-cooled design.
- Engine servicing points are readily accessible.
- Dual element filter and pre cleaner are standard.

HYDRAULICS

V400 Skid Loader



When maximum hydraulic power is needed to run demanding attachments, the V400 skid loader is equipped with the tools to get the job done right.

- High system pressure delivers more hydraulic muscle to power demanding attachments and deliver superior lifting and breakout forces.
- Standard proportional auxiliary hydraulic control gives the operator the ability to adjust attachment speeds with infinitely adjustable flow control.
- Standard auxiliary detent (at full flow) allows the operator to set the hydraulic flow for continuous operation.
- Standard Hydraglide™ ride control system allows the lift arm to “float” when transporting loads, minimizing loss of material, and increased operator comfort.
- 40.8 gpm (154 L/min) high-flow option is designed to handle virtually every high-flow/high-performance attachment.
- Lift cylinders incorporate cushioning for smoother operation when lowering the lift arm.
- Hydrostatic transmission with direct engine coupling provides high operating efficiency.

ATTACHMENT SYSTEM



All-Tach®



Power-A-Tach®

The Gehl V400 skid loader is available with two quick-attach systems designed to enhance jobsite efficiency.

- Standard manual All-Tach® system engages and disengages attachments with a single lever.
- Optional Power-A-Tach® system with single switch operation allows for attachment changes hydraulically, further enhancing jobsite productivity.
- Both systems are compatible with all universal-type skid loader attachments.

LIFT ARM



The V400 skid loader vertical-lift arm design was created for maximum reach, superior strength and optimal operator visibility.

- Unique vertical-lift, high-integrity lift arm lifts loads in a 'true' vertical path with a pin height of 143.6 inches (3647 mm) providing 39.5 inches (1003 mm) of reach.
- Low-profile lift arm design provides outstanding forward and side visibility.
- Single-plane lift arm design features a heavy-duty timing link, upper-rear channel support and large diameter pivot pins, providing best-in-class vertical and lateral strength and rigidity, as well as exceptional rear visibility.
- Four-point support through dual bucket cylinders and two lift arm stop blocks on the front of the main frame evenly distribute digging forces.

SERVICEABILITY



At Gehl we know ease of serviceability is very important to our customers. The model V400 skid loader is sure to exceed their expectations.

- Large engine cover is hinged and positioned by gas-springs to assist lifting and holding in place, and allows for easy return to closed/operating position.
- Large rear door easily opens on hinges on right side, allowing full access for daily maintenance.
- Swing-out cooler provides improved access to engine bay area.
- Entire cabin structure tilts rearward with a gas strut/spring for easy internal service access.
- Drive chains and axle bearings are sealed systems that require no maintenance.
- Coded wiring takes the guesswork out of electrical system identification.
- Cabin filter is located on the top of the operator structure allowing it to pull more clean, fresh air and less debris.
- Rear side panels can be removed with the lift arm in the raised or lowered position.
- Hydraulic tank dipstick allows for simple and fast hydraulic fluid checks.
- Check engine coolant quickly through the handy sight gauge.

SPECIFICATIONS

V400 Skid Loader

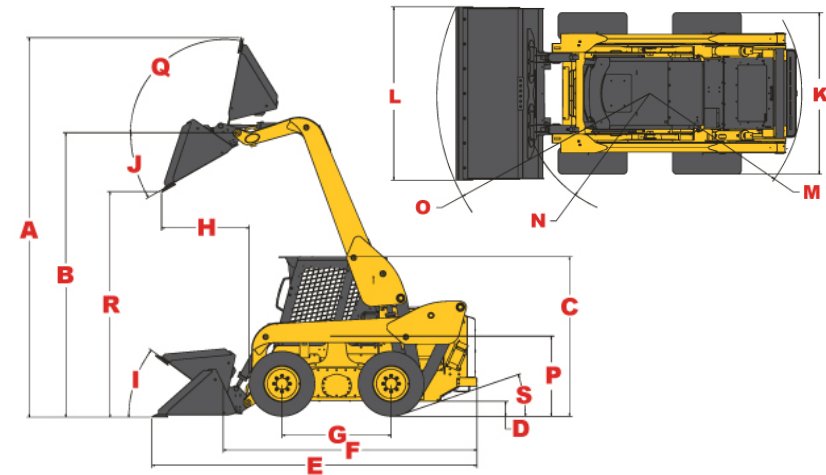
DIMENSIONS

A. Overall Operating Height (mm)	186.8" (4745)
B. Height to Hinge Pin (fully raised) (mm)	144" (3647)
C. Overall Height (to top of ROPS) (mm)	82.0" (2083)
D. Ground Clearance to Chassis (mm)	7.3" (185)
E. Overall Length w/ Bucket (mm)	158.5" (4026)
F. Overall Length w/o Bucket (mm)	121.5" (3086)
G. Wheelbase – Nominal (mm)	54.6" (1387)
H. Dump Reach (mm)	39.5" (1003)
I. Bucket Rollback at Ground	31°
J. Bucket Dump Angle	31°
K. Overall Width w/o Bucket (mm)	79.5" (2019)
L. Bucket Width (mm)	84" (2134)
M. Clearance Circle (rear) (mm)	70.5" (1791)
N. Clearance Circle (front, w/o bucket) (mm)	50.8" (1290)
O. Clearance Circle (front, w/ bucket) (mm)	88.5" (2248)
P. Seat to Ground Height (mm)	40.8 (1036)
Q. Bucket Rollback at Full Height	100°
R. Dump Height (mm)	114.8" (2916)
S. Departure Angle	19°
Standard Tire Size	14.00 x 17.5 HD

ENGINE

Make/Model	Cummins QSB 4.5
Type	Turbocharged Diesel, Tier III-certified
Displacement (L)	272 cu. in. (4.5)
Gross Power (kW) @ rpm	99 hp (74) @ 2200
Maximum Torque (Nm) @ rpm	326 ft.-lbs. (442) @ 1300

REFERENCE DIAGRAMS



HYDRAULIC SYSTEM

Auxiliary Hydraulics – Standard (L/min)	32 gpm (121)
High-Flow Option (L/min)	40.8 gpm (154)
System Relief Pressure (bar)	3500 psi (241.3)
Reservoir Capacity (L)	16.8 gal. (63)

CAPACITIES/WEIGHTS

Rated Operating Capacity ⁽¹⁾ (kg)	4000 lbs. (1814)
Tipping Load (kg)	8000 lbs. (3629)
Operating Weight ⁽²⁾ (kg)	11,100 lbs. (5035)
Fuel Tank (L)	31.3 gal. (118)

(1) Per SAE J818, SAE J732, and ISO 14397

(2) Unit weight with standard bucket, 175 lb. (79 kg) operator, and full fuel tank.

COMPETITIVE COMPARISONS

Make	Gehl	Bobcat
Model	V400 (Tier III)	S850 (Tier III)
PERFORMANCE		
Rated Operating Capacity	4,000 lbs.	3,950 lbs.
Operating Capacity with Optional Counterweight	N/A	N/A
Tipping Load	8,000 lbs.	7,900 lbs.
Height to Hinge Pin	144"	144"
Dump Height	115"	116"
Dump Reach at Max. Height	39.5"	29.7
Bucket Dump Angle	31°	42°
Bucket Breakout Force	9,125 lbs.	Not Published
Bucket Rollback at Ground Level	31°	30°
Arm Lifting Force	6,225 lbs.	Not Published
Lift Arm Geometry	Vertical Lift	Vertical Lift
ENGINE		
Engine Make	Cummins	Kubota
Engine Model	QSB 4.5 Turbo	V3800-DI-T-E3 Turbo
Number of Cylinders	4	4
Displacement	272 cu. in.	230 cu. in.
Gross Power	99 hp	92 hp
Maximum Torque	326 ft.-lbs.	232 ft.-lbs.
DRIVE TRAIN		
Max Travel Speed – Low Speed	6.5 mph	7.1
Max Travel Speed – High Speed	11.2 mph	12.3
Tire Size	14 x 17.5	14 x 17.5
HYDRAULICS		
Auxiliary Hydraulics – Standard	32 gpm	23 gpm
High-Flow Hydraulics – Optional	41 gpm	37 gpm
System Relief Pressure	3500 psi	3500 psi
Self-Leveling Bucket	Standard	Optional
DIMENSIONS		
Reference Bucket Capacity	23.6 cu. ft.	16.7 cu. ft.
Overall Length without Bucket	121.5"	119.3"
Overall Width	79.5"	79"
Reference Bucket Width	84"	80"
Height to Top of ROPS	82"	83.4"
Ground Clearance	7.3"	Not Published
Angle of Departure	19°	27°
Wheelbase	55"	52.9"
Fuel Tank	31.25 gal.	32.8 gal.
Hydraulic Tank / System Reservoir Capacity	17 / 25 gal.	3 / 9.5 gal.
Operating Weight	11,100 lbs.	10,008 lbs.